

Ultra Tine Guide

Laser Guidance System



- Increase Your Company's Profit & Safety Ratings
- Raise Productivity Levels of Your Forklift Drivers



Line Generated Laser



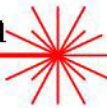
Dot Generated Laser

US-Laser, Inc.

Quality Laser Products
Since 1982



The Tine-Guide Laser Guidance System



The **Tine-Guide Laser** units are designed to better assist forklift drivers. The **Tine-Guide** projects a laser dot or line to give drivers a constant visual guide when lining the forks/tines for placement and have been designed to fit most fork-lifts.

The **Tine-Guide Units** are generally mounted in the center of the forklift carriage allowing for maximum movement of all the forks/tines. Although the Tine-Guide Unit can be mounted on the outer corners of the carriage or anywhere else that's appropriate for your use. The Tine-Guide is heavy duty and virtually indestructible which is extremely important on the forklift application. Easy access in recharging the high output Nickel Metal Hydride Battery, simply remove Velcro strip located on the front side of the unit and remove battery.

The laser is hermetically sealed, and electronically isolated from the housing, which makes it suitable for all applications. The **Tine-Guide Laser** is a highly efficient 635-nm less than 40 milliamp current draw module that incorporates a Thermal Disconnect Circuit (Patented) that will automatically shut down the laser if the ambient temperature exceeds the maximum temperature rating of the laser, keeping the laser from being damaged.

Standard Tine-Guide



Ultra Tine-Guide



- Contact Your Dealer for Special Pricing -

